



## Economic Outlook for 1/31/2017

### Adept Analyst

Technical Market Timer: Bullish

#### Fundamental Indicators:

	Median	Mean
S&P 500 P/E (TTM)	21.70	34.22
S&P 500 P/E (Forward)	18.70	24.20
Estimated 5-Year Long-Term Earnings Growth Rate	9.30	10.93
20-Year Corporate AAA Bond Yield		3.74%

Leading Indicator is Neutral) Current Average S&P 500 Estimated EPS / Previous Average S&P 500 Estimated EPS:  
26.07/26.02 = 1.00

Lagging Indicator) Current Average S&P 500 Inventory-to-Sales Ratio: 1,662.08/20,864.61 = 7.97%

Compared to Previous Average S&P 500 Inventory-to-Sales Ratio: 1,662.39/20,652.25 = 8.05%

#### Short Tells

SPY Short Ratio: 2.16

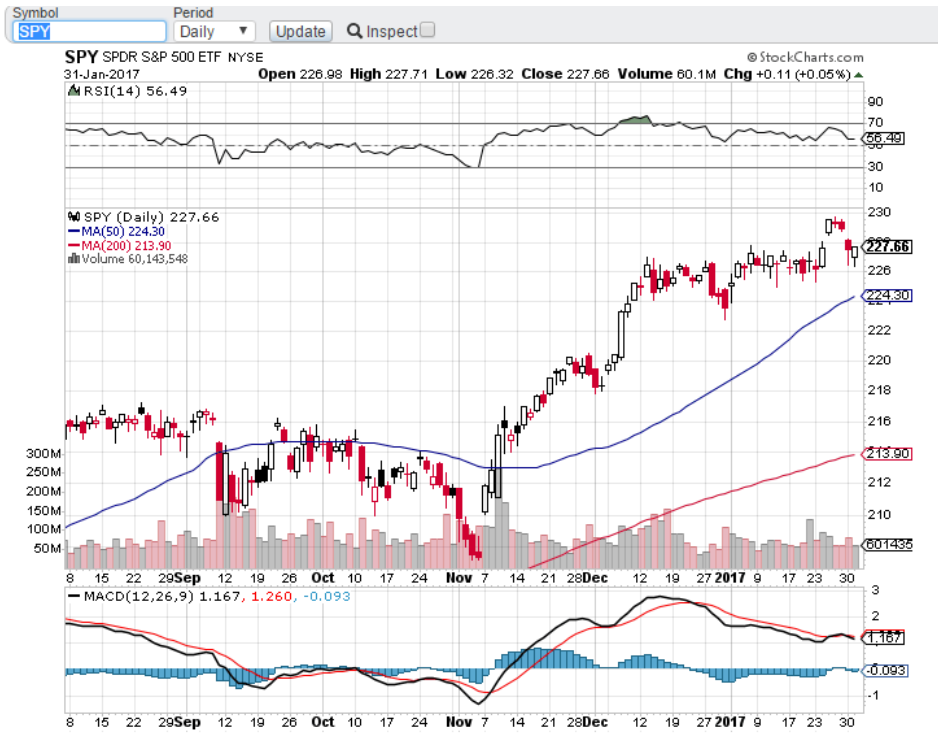
Short Ratio < 0.40	Bullish
0.40 < Short Ratio	Bearish

SPY Put-Call Ratio: 1.383

Put-Call Ratio < 0.60	Bullish
0.60 < Put-Call Ratio < 1.00	Neutral
1.00 < Put-Call Ratio	Bearish

# Golden Cross/Death Cross

S&P 500 50-Day Moving Average and 200-Day Moving Average: Bullish Market Trend



## Warren Buffet's Market Cap-to-GDP

Ratio = Total Market Cap / GDP	Valuation
Ratio < 50%	Significantly Undervalued
50% < Ratio < 75%	Modestly Undervalued
75% < Ratio < 90%	Fair Valued
90% < Ratio < 115%	Modestly Overvalued
Ratio > 115%	Significantly Overvalued
Where are we today (1/31/2017)?	Ratio = <b>126.1%</b> , Significantly Overvalued

Please see: <http://www.gurufocus.com/stock-market-valuations.php>

## Schiller PE

Shiller P/E: 28.5 (-0.09%)

Shiller P/E is 70.7% higher than the historical mean of 16.7

Implied future annual return: -1.3%

Historical low: 4.8

Historical high: 44.2

S&P 500: 2,278.87

Regular P/E: 26 (historical mean)

Scenario	Shiller P/E after 8 Years	Annual Return from Today (%)
Really Lucky	Mean x 150%	4.6%
Lucky	Mean x 125%	2.3%
Reverse to the Mean	Mean x 100%	-0.3%
Unlucky	Mean x 75%	-3.7%
Really Unlucky	Mean x 50%	-8.2%

Please see: <http://www.gurufocus.com/shiller-PE.php>

### Morningstar's Market Fair Value

All Rated Stocks

01/31/2017 = 1.03

01/26/2017 52-Week High = 1.04

02/11/2016 52-Week Low = 0.86

12/31/2004 All-Time High = 1.14

11/20/2008 All-Time Low = 0.55

Market Fair Value	Valuation
Ratio < 1.00	Undervalued
1.00	Fair Valued
Ratio > 1.00	Overvalued

Please see: <http://www.morningstar.com/market-valuation/market-fair-value-graph.aspx>

### Value Line's Median Appreciation Potential

VLMAP = 30% Hypothesized appreciation potential of all 1700 stocks 3-5 years hence.

26 Weeks Ago = 40%

Market Low 3-9-09 = 185%

Market High 8-15-16 = 40%

Please see Summary & Index (subscription required): <http://valueline.com/>